



[www.SaveCrystalRiver.com](http://www.SaveCrystalRiver.com)

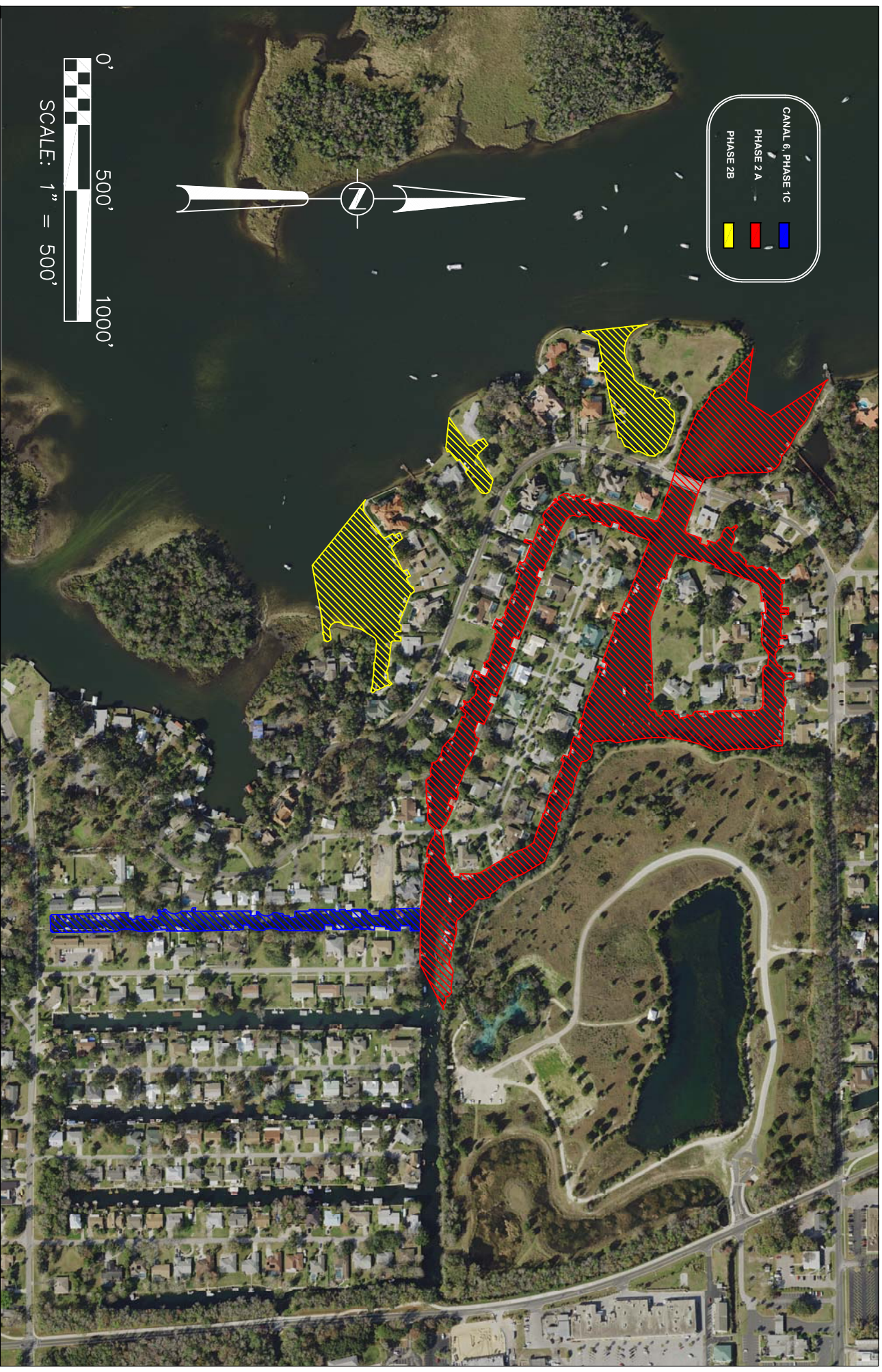
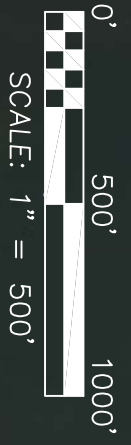
[www.kingsbayrestorationproject.com](http://www.kingsbayrestorationproject.com)

Save Crystal River is working hard to address concerns that residents may have about our use of Schatz Island/Paradise Point. We would like to clarify some of the information that may be circulating. Below are some of the accommodations we are making to address these concerns. For more information and updates, please visit our "Neighborhood Update" on the Kings Bay Restoration Project website and sign up for our Newsletter by providing us with your email address, follow us on Facebook, or email us at [info@savecrystalriver.com](mailto:info@savecrystalriver.com). Our Executive Director, Dr. Michelle Sivilich, can also be reached at: (352) 257-6359 for additional questions.

- **Why do we need to use Schatz Island?** We will be working in densely populated manmade canals. Schatz Island was selected based on space available, proximity to the canals to be cleaned, land owner approval, cost efficiency, and construction work practicality for areas to be restored. This was effectively our only option that met all of that criteria & was approved by the permitting agencies.
- **Number and timing of dump trucks at Schatz Island:**
  - Dump trucks will only enter/exit Schatz Island on an as-needed basis. They are only there periodically to haul off detrital materials when the storage bags reach capacity. Trucks will not be running every day.
  - Trucks will be limited to entering/exiting during the week and between 7am-5pm unless there are extenuating circumstances.
- **Concerns of Trucks going over the Kings Bay bridge and traffic safety:**
  - Trucks will enter and exit the property from the south on Kings Bay Drive to avoid going over the bridge
  - Flagmen will be positioned to notify traffic when trucks are entering/exiting to ensure safety
  - Truck entering highway signs will be installed in both directions
  - Trucks will adhere to the speed limits
  - Trucks are much taller than other vehicles giving greater visibility to both the truck driver and other traffic.
  - These trucks are comparable to other commercial vehicles traveling on Kings Bay Drive such as garbage trucks, school buses, concrete trucks, and others.
- **Conditions SCR and Sea and Shoreline are voluntarily making to address neighborhood concerns:**
  - Privacy fencing with screening will be installed around the entire island to lessen the impact of workplace noise and the worksite view to neighbors and boaters.
  - Security cameras will face the interior of the worksite only to reduce chances of injury, vandalism, or theft by anyone who might wander into the worksite.
  - Workers will be transported to the worksite to minimize traffic on the road and vehicles entering and leaving Schatz Island.
  - Some workers will be transported by boat.
  - Efforts will be made to ensure trucks do not track mud into the roadways by installation of a wheel wash system.
  - At the end of the project, SCR, Sea & Shoreline, USFWS, and others plan to restore the island with native vegetation even better than it is now, making it a true natural preserve.
- **Length of time Required on Schatz Island:**
  - This depends on factors such as funding, storms, permitting, etc. However, we are anticipating approximately 2-3 years to complete the work to be conducted from the Schatz Island worksite.



CANAL 6 PHASE 1C  
 PHASE 2 A  
 PHASE 2B



**KINGS BAY RESTORATION PROJECT**

KINGS BAY  
 CRYSTAL RIVER, FL 34429

**FOR:** SAVE CRYSTAL RIVER  
**EXHIBIT:** PROJECT AREAS PROCESSED FROM SCHATZ ISLAND

DATE:	01/24/2019
DRAWN BY:	DE
CHECKED BY:	DR
JOB NO.:	E29-19C1006C

REVISIONS:

**SHEET NO.**

**01**